



 bhkala®

THIS BOOK / CATALOGUE / LOGO / ARE PROTECTED UNDER COPYRIGHT ACT.  
AN ILLEGAL, UNAUTHORIZED REPRINT, PUBLISHING, REPRODUCTION, DISTRIBUTION AND MODIFICATION OF ANY IMAGES, PHOTOGRAPHS AND  
PRODUCTS, TOTALLY OR IN PART, FOR ANY PURPOSE, REASON OR CAUSE IS STRICTLY PROHIBITED AND PUNISHABLE UNDER LAW.



1511





bhkala®









1513



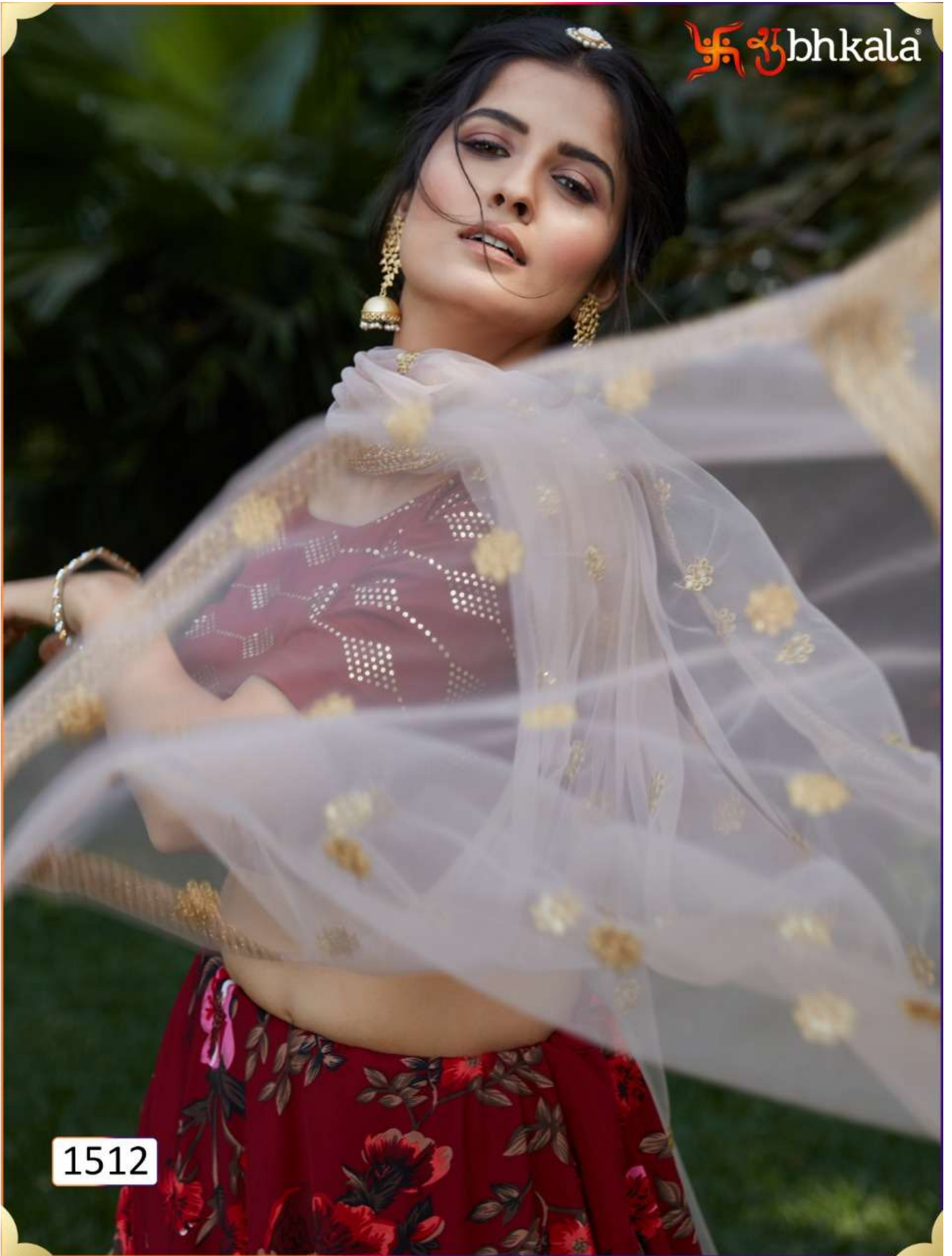


1512





1512







1514







1513







1511



1512



1513



1514



Design NO. (SKU)	Lehenga Color	Lehenga Fabric	Choli Fabric	Dupatta Fabric	SIZE (SEMI-STITCHED)	Lehenga Work	Choli Work	Dupatta Work	Choli Length (MTR)	Lehenga Length (INCH)	Dupatta Length (MTR)
1511	Pink - White	Silk Crepe	Cotton	NET	UPTO 42 BUST AND WAIST	Printed	Thread With Sequence Embroidered Work	Thread Embroidered Work	1	42	2.40
1512	Maroon -Beige	Silk Crepe	Viscose Cotton	NET	UPTO 42 BUST AND WAIST	Printed	Pigment Mirror Foil work	Sequence Embroidered Work	1	42	2.40
1513	Navy Blue	Silk Crepe	Rayon	NET	UPTO 42 BUST AND WAIST	Printed	Thread With Sequence Embroidered Work	Thread Embroidered Work	1	42	2.40
1514	Dusty - Beige	Cotton	Viscose Cotton	NET	UPTO 42 BUST AND WAIST	Jacquard Weaving	Foil Printed Work	Sequence Embroidered Work	1.2	42	2.40

THIS BOOK / CATALOGUE / LOGO / ARE PROTECTED UNDER COPYRIGHT ACT.  
 AN ILLEGAL/UNAUTHORIZED REPRINT, PUBLISHING, REPRODUCTION, DISTRIBUTION AND MODIFICATION OF ANY IMAGES, PHOTOGRAPHS AND PRODUCTCS, TOTALLY OR IN PART, FOR ANY PURPOSE, REASON OR CAUSE IS STRICTLY PROHIBITED AND PUNISHABLE UNDER LAW.