



MOHMANTHAN™

*Royal*



MAHOTSAV®  
GROUP



Enigma



MOHMANTHAN™

*Royal*



MAHOTSAV®  
GROUP



Enigma

★ --DEEP MAROON BURGUNDY ECHOES-- ★

*Get a weaving tapestry, which embraces a woman's essence with  
the richness of maroon, reflecting her strength and grace.*

.....  
Fabric: Silk Crepe Satin  
Accessories: Belt, Redy Blouse  
.....

23310



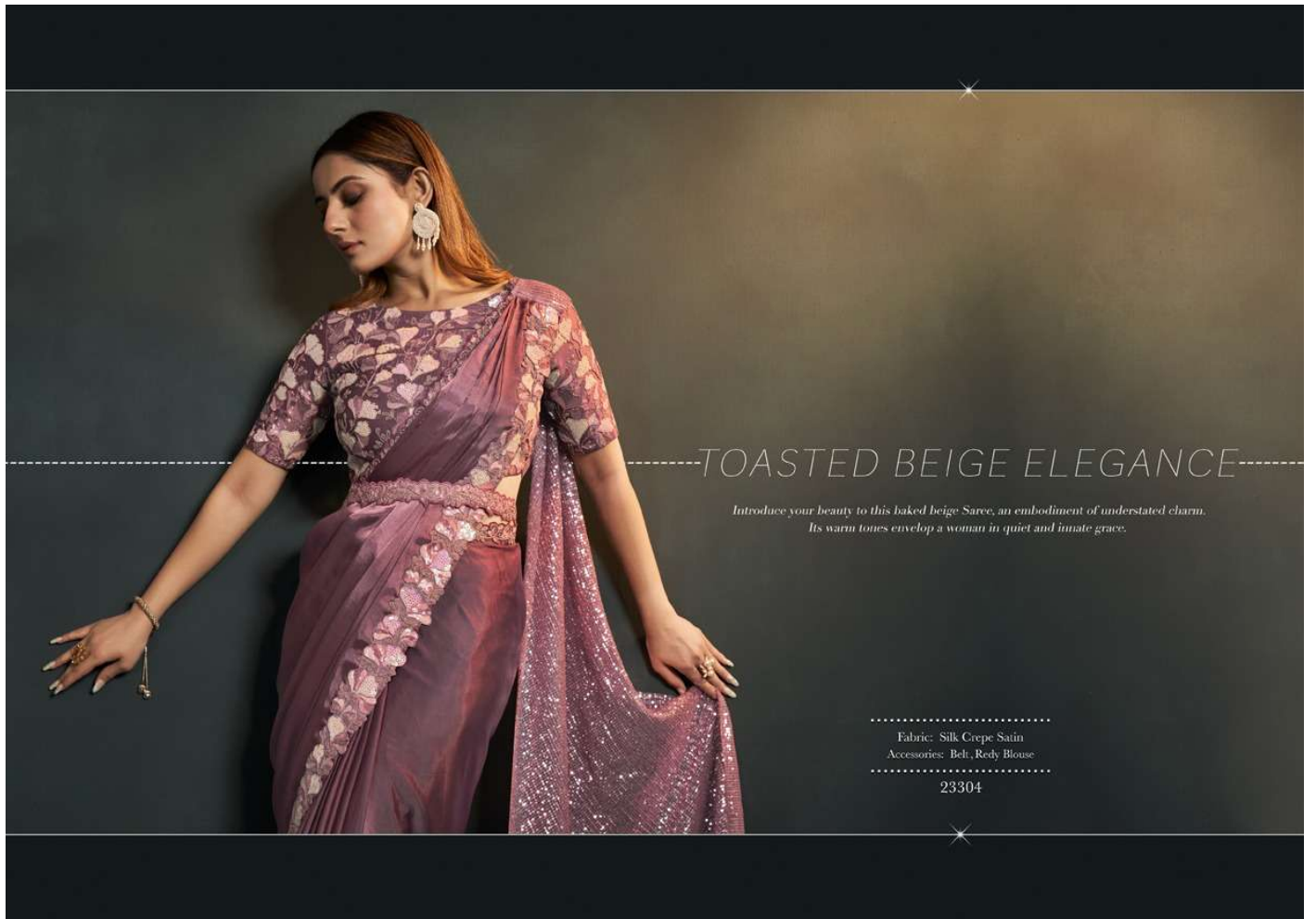
Step into elegance with the Burgundy Maroon Saree, where shades of maroon make you a woman with an aura of poise and allure with capturing spirit.



Fabric: Silk Crepe Satin  
Accessories: Belt, Reddy Blouse

23310





## -----TOASTED BEIGE ELEGANCE-----

*Introduce your beauty to this baked beige Saree, an embodiment of understated charm.  
Its warm tones envelop a woman in quiet and innate grace.*

.....  
Fabric: Silk Crepe Satin  
Accessories: Belt, Redy Blouse  
.....

23304



*Adorned in beige, she exudes an enchanting thriving life's subtle tones.  
This attire pays homage to enduring beauty that thrives in understatement.*



Fabric: Silk Crepe Satin  
Accessories: Belt, Rody Blouse  
23304

## RADIANT YELLOW GLAMOUR

*A Radiating yellow with deep illuminate hues of elegance, this saree envelops a woman in golden warmth, reflecting her inner glow.*



Fabric: Organza Silk Crepe  
Accessories: Belt, Rody Blouse

23311



Enter a realm of elegance with this Radiant Yellow Saree, where golden hues ignite a sense of splendor.



Fabric: Organza Silk Crepe  
Accessories: Belt, Reddy Blouse

23311





## EBONY-PURPLE FUSION

*Affectionately, this Mauve Noir Saree, where the fusion of purple and black embodies enigmatic elegance, captures the essence of a woman's multi-faceted charm.*

Fabric: Silk Crepe Satin

Accessories: Belt, Rody Blouse

23307

With a touch of mesmerizing darkness, the drapes tell a story of mystery and  
sophistication, with sensuality of Silk Crepe Satin in Ebony.



Fabric: Silk Crepe Satin  
Accessories: Bell, Reddy Blouse  
23307

*Amidst this palette of calm blue, her beauty emanates an electrifying allure,  
creating a mesmerizing blend of serene poise and exhilarating charm.*



.....  
Fabric: Satin Silk Crape  
Accessories: Belt, Reddy Blouse, Jacket  
.....  
23302

## VIBRANT BLUE CHARM

Experience tranquility with the Vibrant Blue Sarve, where cool blue tones evoke serene emotions.



100  
FUSION SAREE

Fabric: Satin Silk Crape  
Accessories: Belt, Reddy Blouse, Jacket

23302



-----CHARISMATIC STERLING GREY-----

*With each fold, you capture a different shade, symbolizing a testament to her elegance,  
where colours blend in harmony.*



.....  
Fabric: Silk Grape Satin  
Accessories: Belt, Reddy Blouse  
.....

23305



## RUSTIC BLUSH APPEAL

*With a blend of peach pink and mud-baked hues that embodies natural charm,  
this attire mirrors a woman's timeless beauty.*

.....  
Fabric: Silk Crepe Satin  
Accessories: Belt, Redy Blouse  
.....

23308



*Capture the desires with the fusion of pink and baked mud shades that reflects a woman's ageless grace, echoing the earthy elegance inherent in neutral tones.*



Fabric: Silk Crepe Satin  
Accessories: Belt, Reddy Blouse

23308

A CASCADE OF LIGHT  
BROWNS WITH EARTHY HUES

*Radiant as a summer sunrise, this elegant saree intertwines chocolate-light brown shades with baked earthy harmonious fusion of nature-inspired style.*



Fabric: Silk Crepe Georgette  
Accessories: Belt, Rody Blouse

23301





Create an illusion of charming beauty  
with this magnetic black Saree, where  
ebony depths kindle desire.

-----TEMPTING-----

-----NOIRELEGANCE-----

.....  
Fabric: Satin Silk Crepe  
Accessories: Belt, Redy Blouse  
.....

23312

VIVID SPECTRUM GLAMOUR



Wrap your grace in this Spectrum-Inspired Saree, a canvas of multiple hues that mirror a woman's vibrant beauty.



Fabric: Silk Crepe Georgette

Accessories: Belt, Rody Blouse

23303

Embody yourself in a dark mystery, evoking an irresistible charm that's both graceful and magnetic. Let each drape tell a tale of irresistible emotions.



Fabric: Satin Silk Crepe  
Accessories: Belt, Rody Blouse  
23312

## TENDER PINK SERENITY

A perfect tender pink is a reflection of unassuming elegance. This attire honours the beauty that radiates silent power, showcasing a blossoming draped dream.



Fabric: Silk Crêpe Georgette  
Accessories: Belt, Reddy Blouse, Jacket

23306





*A flawless gentle light colour that embodies understated sophistication. This saree celebrates the allure that exudes subdued strength, presenting an unfolding vision woven in fabric.*



.....  
Fabric: Silk Crepe Georgette  
Accessories: Belt, Reddy Blouse, Jacket  
.....  
23306

## GLISTENING MOONLIGHT ELEGANCE-----

*With the ethereal charm of moonlit nights, this attire encapsulates a woman's magnetic elegance through shades that echo the moon's soft glow.*

Multi-Purpose Saree



Fabric: Pattern Jari Georgette  
Accessories: Belt, Reddy Blouse, Jacket

23309

*A silver tone capture the mystique of moonlit serenity, portraying a charm that weaves an enchanting narrative, where each drape tells a story of serene confidence.*



Fabric: Pattern Jani Georgette  
Accessories: Belt, Reddy Blouse, Jacket

23309



-----DELICATE CORAL CHARISMA-----

*Find enchanting peace within peachy-kindle alluring tones. Uplift yourself with an essence through shades that resonate with captivating beauty.*



.....  
Fabric: Organza Silk Crepe  
Accessories: Belt, Rody Blouse  
.....

23313





MOHMANTHAN™



Enigma

PRESENTING

DISCOVER YOUR  
A L L U R E

Step into the domain of "Enigma" a captivating journey into the finesse of women's fashion. This compilation, under the brand of Mohmanthan, delves into a narrative where each article whispers tales of distinctiveness and flair. Every design finds its muse in life's enigmas, giving birth to a charm that's truly one-of-a-kind.

"Enigma" reveres the unsaid, a tribute to the enigmatic attributes defining every woman. The thoughtfully curated assortment captures the core of feminine vigor and composure, presenting a fusion of outfits resonating with the diverse dimensions of contemporary womanhood.

Within these pages, you'll uncover an orchestra of hues and outlines, with each piece reflecting assurance and individuality. Catering to a range of tastes, from casual nonchalance to refined sophistication, "Enigma" empowers women to vocalize bold narratives through their fashion preferences.

As we invite you to traverse the mystique inherent in every woman, recognize that this catalog is not just a collection of garments, but an embodiment of the vibrant personas shaping our reality.

Explore, accept, and relish the allure that's distinctly yours.



23301



23302



23303



23304



23309



23310



23311



23305



23306



23307



23308



23312



23313



MOHMANTHAN™



MAHOTSAV  
GROUP

DESIGN NO	SAREE FABRIC	BLOUSE FABRIC	Saree WORK	Belt	CUSTZ.(SEMISTITCH/UN-STITCH)	BLOUSE SIZE
23301	Silk Crepe Georgette	Japan Crepe	Cord Sequence & Thread Embroidered & Stone Work	Available	stitched Blouse	up to 38 Inch with margin of 42 inch
23302	Satin Silk Crepe	Banglari Silk	Cord Sequence & Thread Embroidered & Stone Work	Available	stitched Blouse	up to 38 Inch with margin of 42 inch
23303	Silk Crepe Georgette	Organza Silk	Cord Sequence & Thread Embroidered & Moti Work	Available	stitched Blouse	up to 38 Inch with margin of 42 inch
23304	Silk Satin Crepe	Japan Crepe	Cord Sequence & Thread Embroidered & Moti Work	Available	stitched Blouse	up to 38 Inch with margin of 42 inch
23305	Silk Crepe Satin	Organza Silk	Cord Sequence & Thread Embroidered & Stone Work	Available	stitched Blouse	up to 38 Inch with margin of 42 inch
23306	Silk Crepe Georgette	Organza Silk	Cord Sequence & Thread Embroidered & Stone Work	Available	stitched Blouse	up to 38 Inch with margin of 42 inch
23307	Silk Crepe Satin	Malai Satin	Cord Sequence & Thread Embroidered & Stone Work	Available	stitched Blouse	up to 38 Inch with margin of 42 inch
23308	Silk Crepe Satin	Malai Satin	Cord Sequence & Thread Embroidered & Stone Work	Available	stitched Blouse	up to 38 Inch with margin of 42 inch
23309	Pattern Jari Georgette	Banglari Silk	Cord Sequence & Thread Embroidered & Stone Work	Available	stitched Blouse	up to 38 Inch with margin of 42 inch
23310	Silk Crepe Satin	Japan Crepe	Cord Sequence & Thread Embroidered	Available	stitched Blouse	up to 38 Inch with margin of 42 inch
23311	Organza Silk Crepe	Organza Silk	Cord Sequence & Thread Embroidered & Stone Work	Available	stitched Blouse	up to 38 Inch with margin of 42 inch
23312	Satin Silk Crepe	Organza Silk	Cord Sequence & Thread Embroidered & Stone Work	Available	stitched Blouse	up to 38 Inch with margin of 42 inch
23313	Organza Silk Crepe	Organza Silk	Cord Sequence & Thread Embroidered & Stone Work	Available	stitched Blouse	up to 38 Inch with margin of 42 inch